

Column	A	B	C	Longitudinal Bracing Connection
2 west	0"±	2'-3"±	4'-10"	north face
10 west	17½"±	8'-1½"±	12'-2"	south face
11 east	23"±	5'-7½"±	10'-2"	north face
12 west	23"±	4'-0¼"±	8'-6"	south face
14 west	14"±	10"±	4'-7"	south face

SERVICE LOAD REACTIONS (kips)	
Location	Dead Load
Cap Beam	9
Overhang	3

Temporary Support Notes:

The cap beam and overhang bracket shall be supported for the entire duration of column removal and replacement.

No live load, including construction load, is allowed on the bridge during column replacement.

The contractor is responsible for maintaining the stability of the structure at all times and shall take all necessary precautions to maintain the stability and safety of the existing bridge at the contractor's cost.

The temporary support arrangement shown is one option and is presented for information only. The suitability of the arrangement shall be verified by the contractor during the design of the temporary support.

The contractor shall be responsible for the design of the temporary supports and the temporary foundations with granular base necessary to support the cap beam and the overhang during column replacement.

The contractor shall submit drawings and calculations signed and sealed by a Professional Engineer in the State of Missouri to the Engineer for review a minimum of 4 weeks prior to installation of any temporary supports.

The service loads provided are based on the as-built drawings for the existing bridge and shall be verified by the contractor in the design of the temporary supports.

The cost for furnishing all materials, labor and equipment necessary to design, construct, maintain and remove the Temporary Supports will be considered completely covered by the contract lump sum price for Temporary Supports. No measurement will be made for Temporary Supports. Temporary Supports will be paid for at the contract lump sum price.

Notes:

Part sections show replacement of column on west column line. Replacement of column 11 on east column line similar. See Sheet No. 8 for connection of existing barrier post on new column 11 east.

See Sheets No. 7-8 for details of column removal and new column.

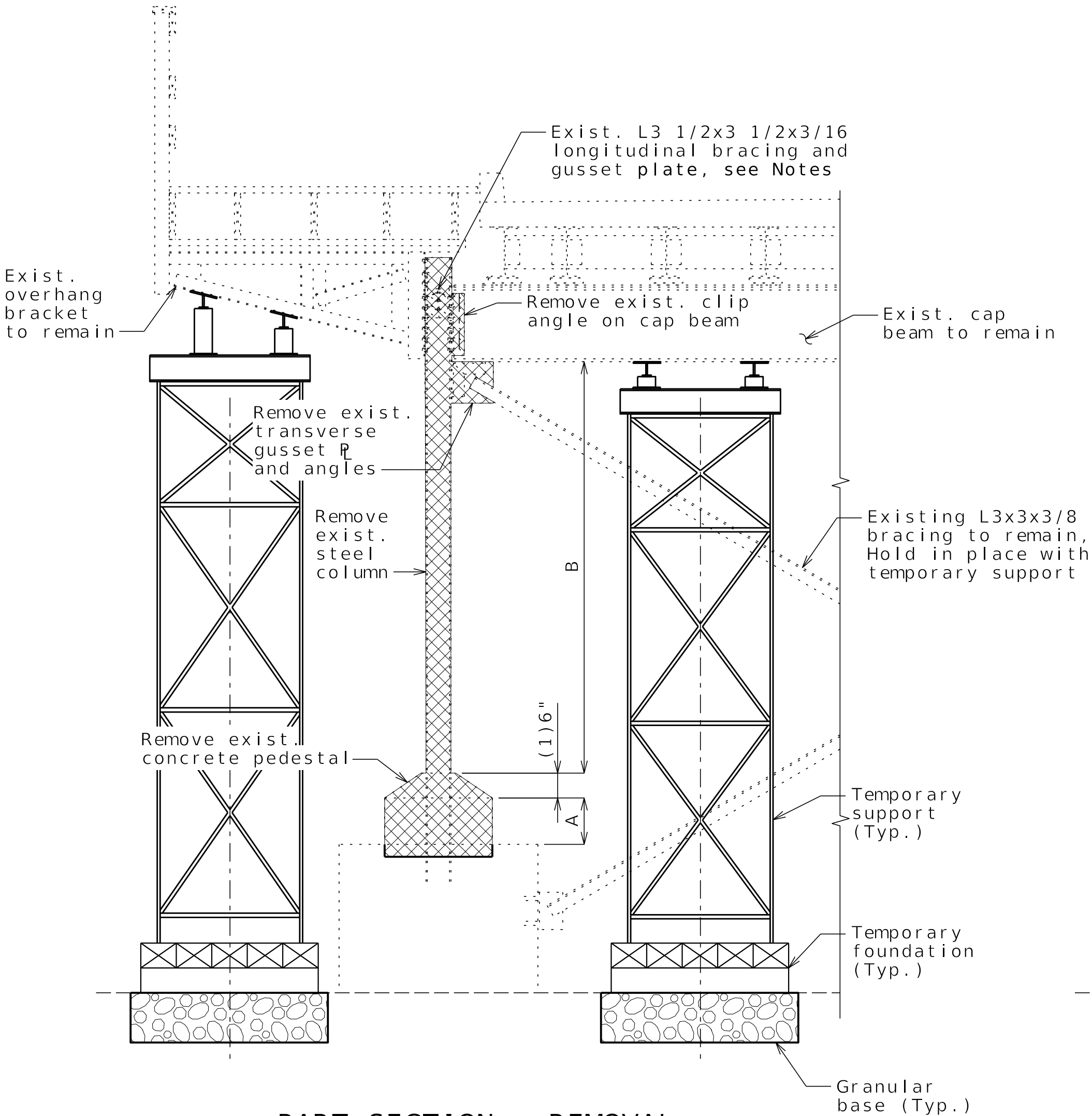
Contractor shall verify all dimensions in the field prior to ordering materials. Dimension C for height of new steel column is approximated from field measured Dimensions A and B and as-built plans.

Exist. L3 1/2x3 1/2x3/16 longitudinal bracing at columns 10 west, 11 east, 12 west and 14 west to remain. Hold in place with temporary support and attach to new gusset plate on new column. See Sheets No. 8-9.

Longitudinal bracing at column 2 west to be replaced. See Sheet No. 9.

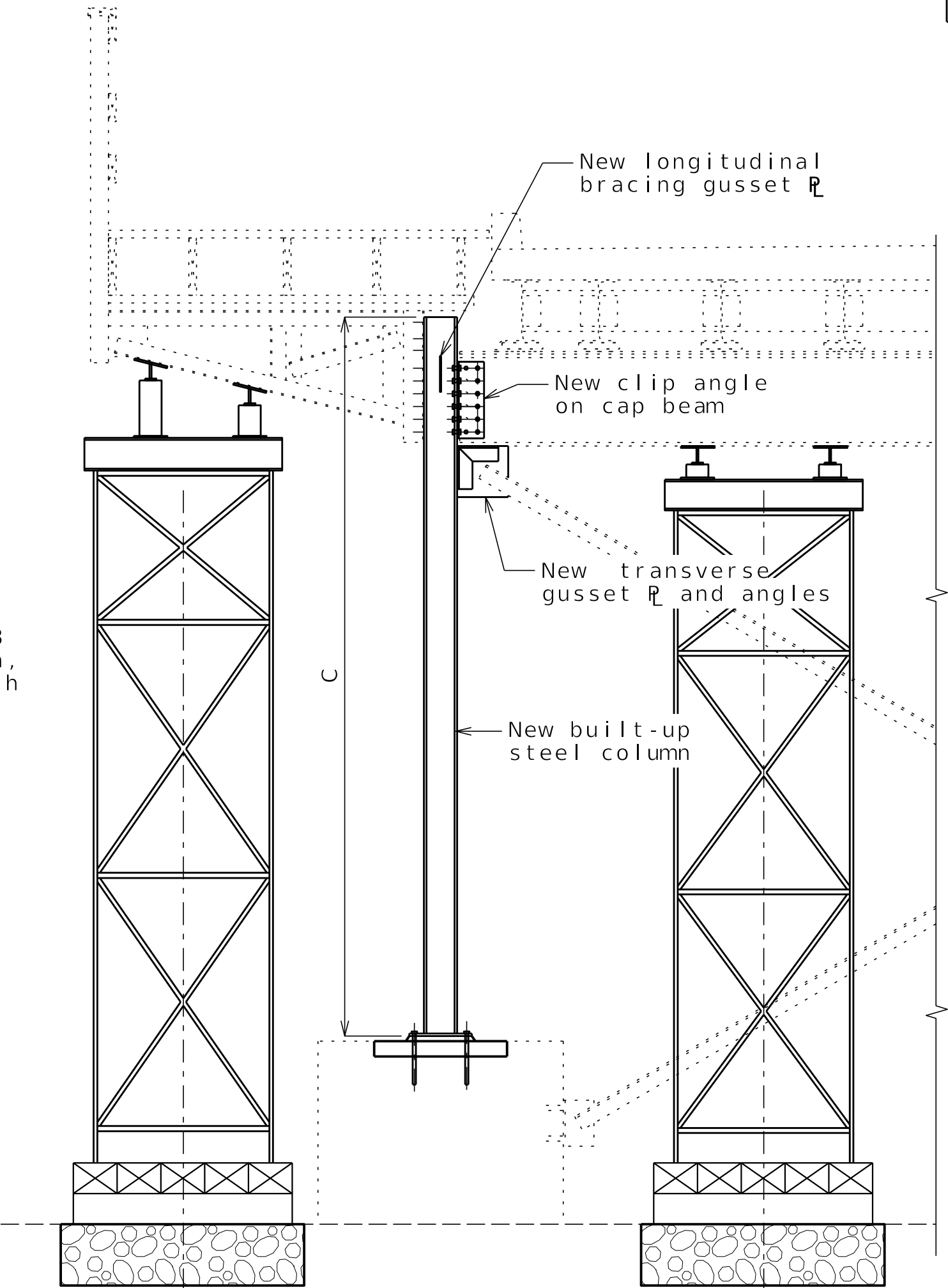
LEGEND

 Removal limits



PART SECTION - REMOVAL
(Possible temporary support arrangement)

(1) 6" dimension of sloped portion of existing pedestal is per the 2008 rehabilitation plans.



PART SECTION - NEW COLUMN



DATE PREPARED 10/9/2025	
ROUTE WASHINGTON	STATE MO
DISTRICT	SHEET NO. 06
COUNTY PETTIS	
JOB NO.	
CONTRACT ID.	
PROJECT NO.	
BRIDGE NO. 39350001	

DESCRIPTION	DATE

COLUMN REPLACEMENT DETAILS	WASHINGTON AVENUE BRIDGE REHABILITATION
----------------------------	--

	HDR Engineering, Inc. 10450 Holmes Rd. Suite 600 Kansas City, MO 64131 816-368-2700 Certificate of Authority: 000856
---	---

IF A SEAL IS PRESENT ON THIS SHEET IT HAS BEEN ELECTRONICALLY SEALED AND DATED.