

# WASHINGTON AVENUE BRIDGE REHABILITATION PROJECT

CURRENT STATUS OF THE PROJECT AND CHANGE ORDERS



**DOUBLE ARCH**  
CONSTRUCTION LLC

# CHANGE ORDER #006

- **SCOPE OF WORK:** REPLACE COLUMNS AT BENT 3 AND 13  
DUE TO EXCESSIVE CORROSION

# BENT 3 – CURRENT CONDITION

- AS WE WENT TO REPLACE THE LONGITUDINAL BRACING, WE FOUND SIGNIFICANT CORROSION THAT WENT THROUGH THE EXISTING COLUMN AND CLIP ANGLE.



# BENT 13 – FIRST RFI (REQUEST FOR INFORMATION)

- DURING THE FIRST WEEK OF THE PROJECT, WE OBSERVED SIGNIFICANT SECTION LOSS ON THE FLANGES AND WEBBING OF THE STRUCTURAL STEEL. WE BROUGHT THIS TO THE ATTENTION OF HDR AND ASKED IF THIS COLUMN NEEDED TO BE REPLACED.
- HDR TOLD US TO MOVE FORWARD WITH THE CONCRETE ENCASEMENT PER PLAN.



# BENT 13 – SECOND RFI

- WHEN WE CAME BACK TO REMOVE THE RIVETS AND REPLACE THE CLIP ANGLE ON THE COLUMN, WE DISCOVERED SIGNIFICANT CORROSION.



# CONCLUSION

- I HELD A SITE MEETING WITH HDR AND THE CITY TO DISCUSS THE CONDITION OF THESE ISSUES AND IT WAS DETERMINED THAT BOTH COLUMNS NEEDED FULL REPLACEMENT.
- IN THESE PICTURES YOU CAN SEE THE RESULTS OF A FULL COLUMN REPLACEMENT AT OTHER LOCATIONS.



# CURRENT TIMELINE FOR CHANGE ORDER 006

- STRUCTURAL STEEL IS ESTIMATED TO BE ON SITE THE WEEK OF 4/20. UNFORTUNATELY, THE ANCHOR BOLTS/SWEDGE BOLTS ARE SPECIALTY ITEMS AND WILL NOT BE AVAILABLE UNTIL 5/1.
- THIS PUTS US AT A COMPLETION DATE FOR THESE COLUMNS OF 5/7.

# OVERALL PROJECT TIMELINE

Original scope of work was completed on March 19<sup>th</sup>.



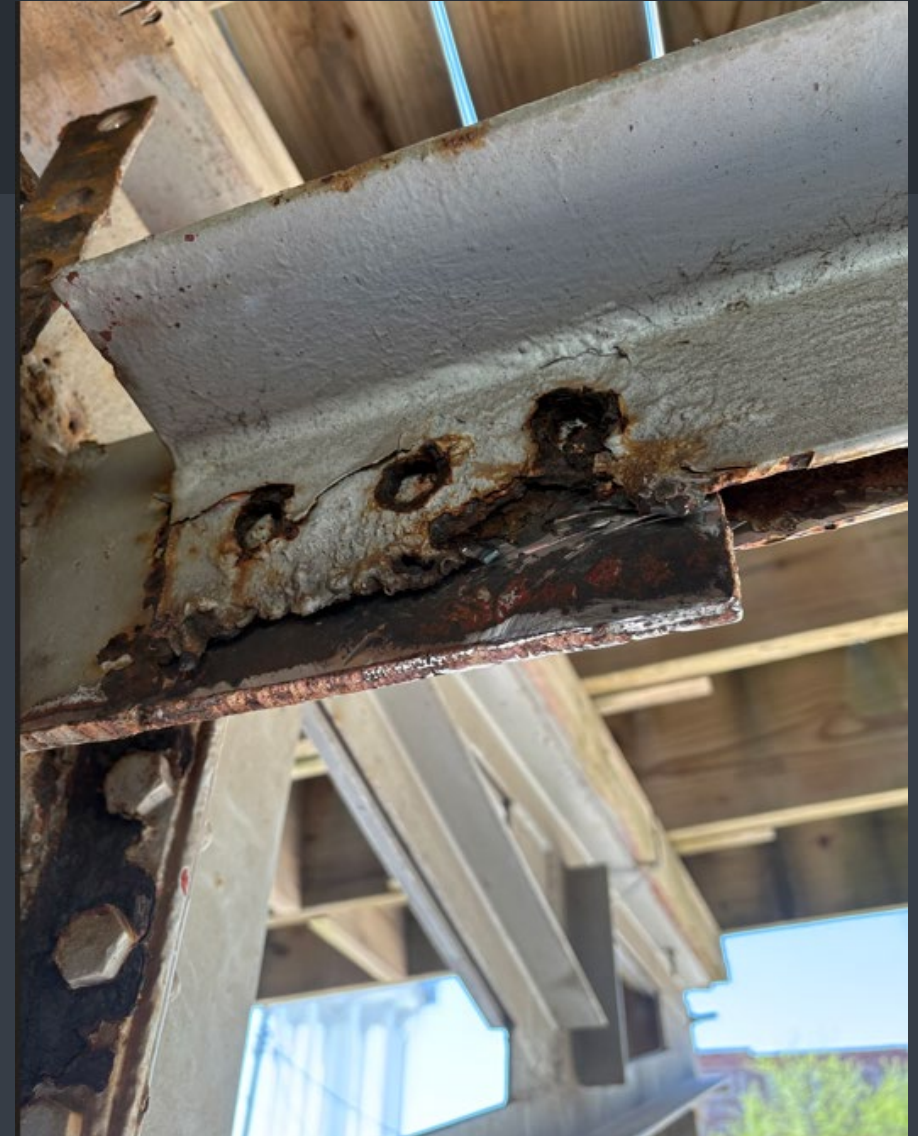
Column replacements will be completed by May 7<sup>th</sup>.



Long Blasting & Painting will begin work immediately. Estimated completion date of June 1<sup>st</sup>.

# POTENTIAL DISCOVERY ITEMS

- WHEN THE PAINTER BEGINS SANDBLASTING, IT IS LIKELY THAT HE WILL RUN INTO MORE ISSUES WITH THE STRUCTURAL INTEGRITY OF SOME OF THESE STEEL MEMBERS.
- DEPENDING ON HIS AVAILABILITY, I'M GOING TO REQUEST THAT HE BEGINS SANDBLASTING ASAP SO WE CAN GET AHEAD OF THESE ISSUES SINCE MATERIAL LEAD TIMES ARE SO LONG RIGHT NOW.



# CURRENT FIELD CONDITIONS



# CURRENT FIELD CONDITIONS CONTINUED



# CURRENT FIELD CONDITIONS CONTINUED



# CURRENT FIELD CONDITIONS CONTINUED





QUESTIONS/COMMENTS?