



CITY OF SEDALIA

Municipal Building
200 South Osage Avenue
Sedalia, Missouri 65301

PUBLIC SERVICE ANNOUNCEMENT

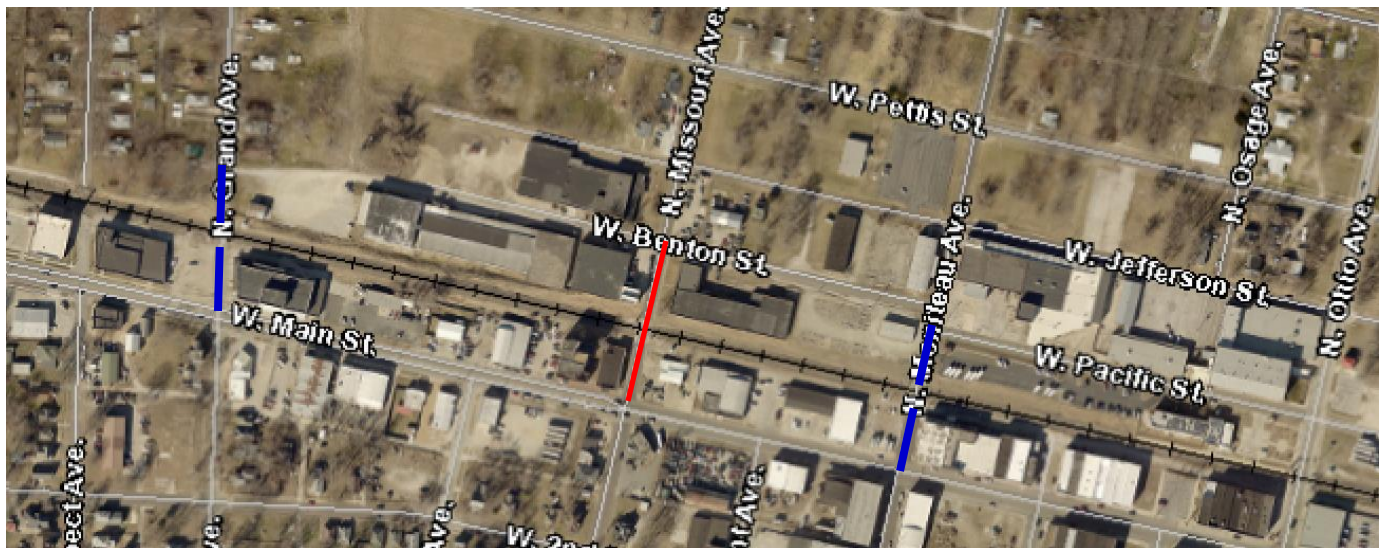
Contact: Brenda Ardrey, Public Works Director
Phone: (660) 827-3000

FOR IMMEDIATE RELEASE
1:30 P.M. CDT, Oct. 27, 2017

Street Closures: N. Missouri Ave. and S. Harding Ave. Rail Crossing Repairs

Rail crossing repairs will be completed on Union Pacific rail crossings this weekend beginning this evening, Oct. 27, 2017.

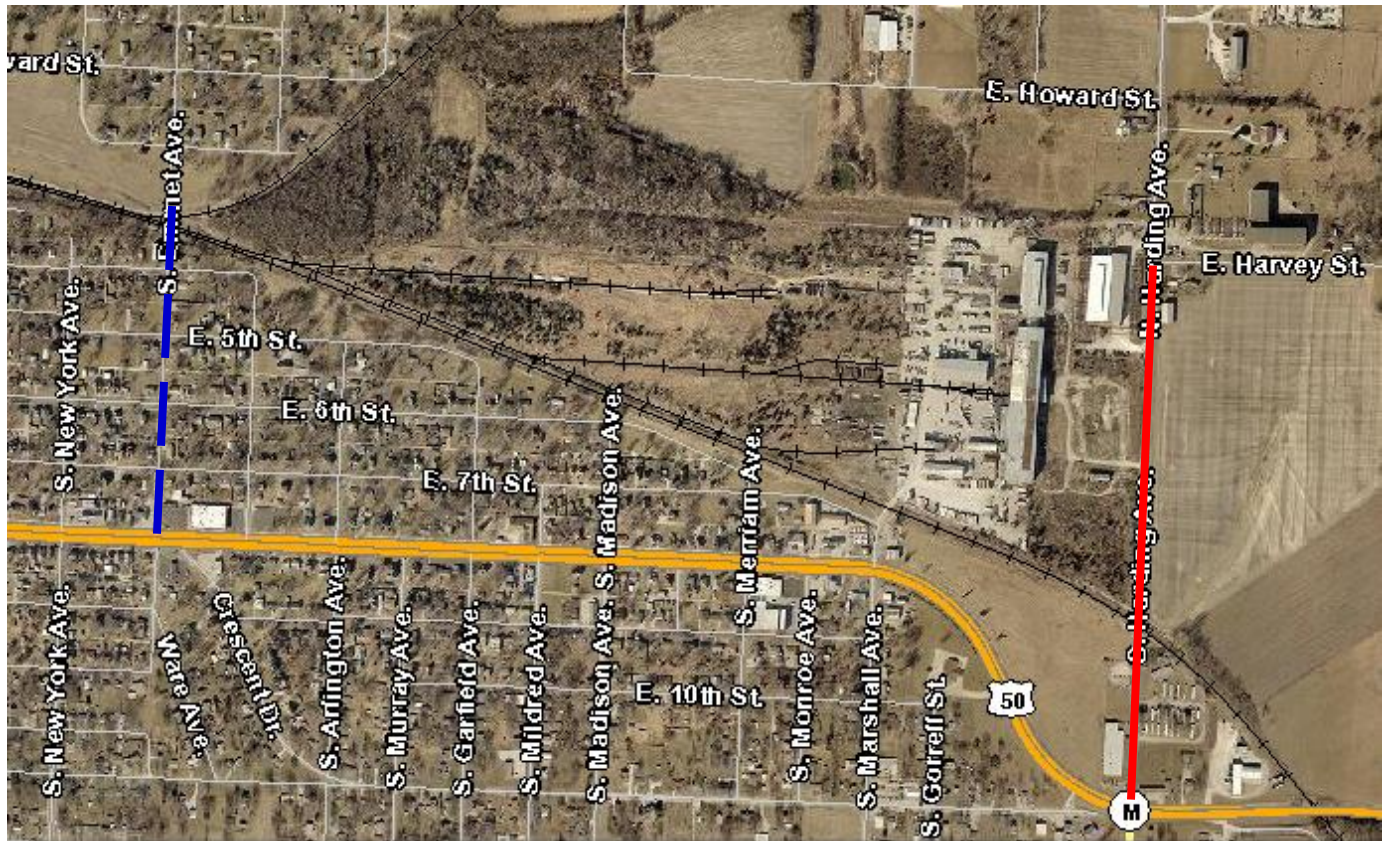
North Missouri Avenue will be closed to traffic from W. Main Street on the south to W. Benton Street on the north beginning at 7:00 p.m. tonight, Oct. 27, 2017, and continuing until 4:00 a.m. Oct. 28, 2017.



Map showing location of N. Missouri Ave. rail crossing work and road closure area (solid line) and nearest open rail crossings N. Grand Ave. and N. Moniteau Ave. (dashed line).

On Saturday evening, Oct. 28, 2017 at 7:00 p.m., South Harding Avenue from U.S. Highway 50 on the south and North Harding Avenue from East Harvey Street

on the north will be closed to through traffic beginning at 7:00 p.m. and continuing until 4:00 a.m., Oct. 29, 2017 to allow for repairs on the Union Pacific rail crossing. Motorists traveling north from U.S. Highway 50 to locations north of the Union Pacific rail crossing and motorists traveling south on N. Harding Avenue to access U.S. Highway 50 will need to find an alternate route during this period.



Map showing location of S. Harding Ave. rail crossing work and road closure area (solid line) and nearest open rail crossing S. Emmet Ave. (dashed line).

All motorists traveling through these areas during the overnight hours of Oct. 27 through Oct. 29, 2017 are encouraged to find alternate routes to avoid delays due to the road closures.

We apologize for any inconvenience due to these road closures as work to improve the crossings and roadways is completed.

When: Fri., Oct. 27, 2017 through Sun., Oct. 29, 2017

Where: North Missouri Avenue will be closed from Main Street on the south to West Benton Street on the north
South Harding Avenue from U.S. Highway 50 on the south and North Harding Avenue from East Harvey Street on the north will be closed to through traffic

Why: Rail Crossing Repairs